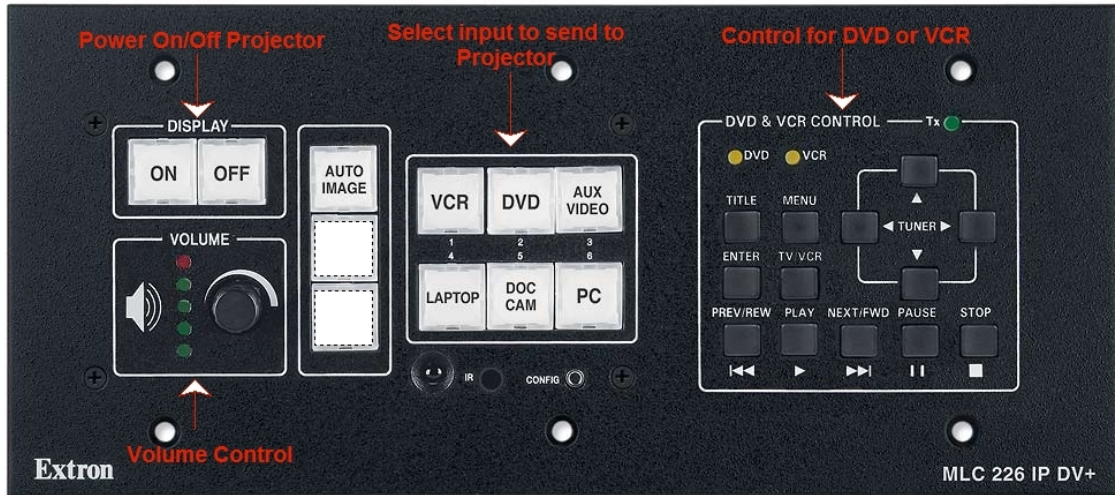


# RCOE Classroom Multimedia Equipment Instructions



**\*\*\*\*\*This unit replaces the remote control units \*\*\*\*\***

## Power on Projector

- Press the (Display) **ON** button on the Extron box

## Computer Projection

- Press the **PC** button on the Extron Box (Make sure computer is powered on)

## DVD/VCR Projection

- Power on DVD/VCR combo unit.
- Press the **DVD or VCR** button on Extron box (Dependent upon Media Type)  
(Use controls on DVD/VCR or on Extron box)

## Laptop Projection

- Connect laptop ⇒ projector cable on lectern (Audio if needed)
- Power on laptop.
- Press the **Laptop** button on the Extron Box

## Elmo (If Present)

- Connect Elmo using RCA Video cable
- Press the **Doc Cam/AUX** button on the Extron Box
- Power on Document Camera

## Shutdown

- Press the **Off** button on the Extron Box

## Audio

**\*All audio inputs are now controlled by the Extron controller. Adjust volume using the volume control on the Extron Box.**

## Video-2

\*Video/AUX is available on the lectern top.

### Lectern Top Inputs

